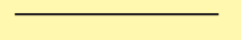



# CH013 - Moleskine Cahier Pocket Journal


Product Dimension(mm): 90x140


## - Ruled Sheets

**Minimum Print Restrictions (Debossing/Screen)**

Line thickness (0.3mm) 

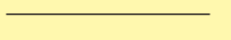
Reversed Line (0.3mm) 


Text (6pt) 


Reversed Text (10pt) 


**Any lines or text below these restrictions will result in a loss of detail when printed**

**Minimum Print Restrictions (Digital/Litho)**

Line thickness (0.2mm) 

Reversed Line (0.2mm) 

Text (3pt) 

Reversed Text (4pt) 

**Any lines or text below these restrictions will result in a loss of detail when printed**

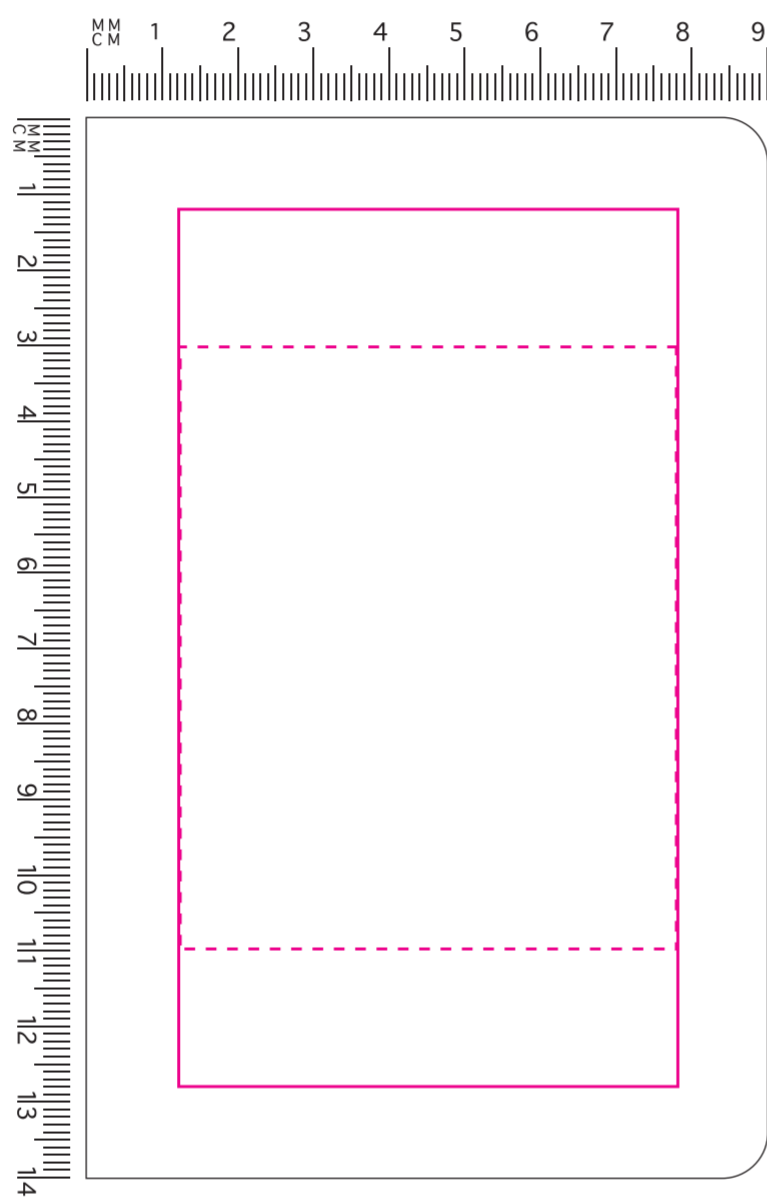
**Actual Artwork Size(s):**

Front Cover = -----

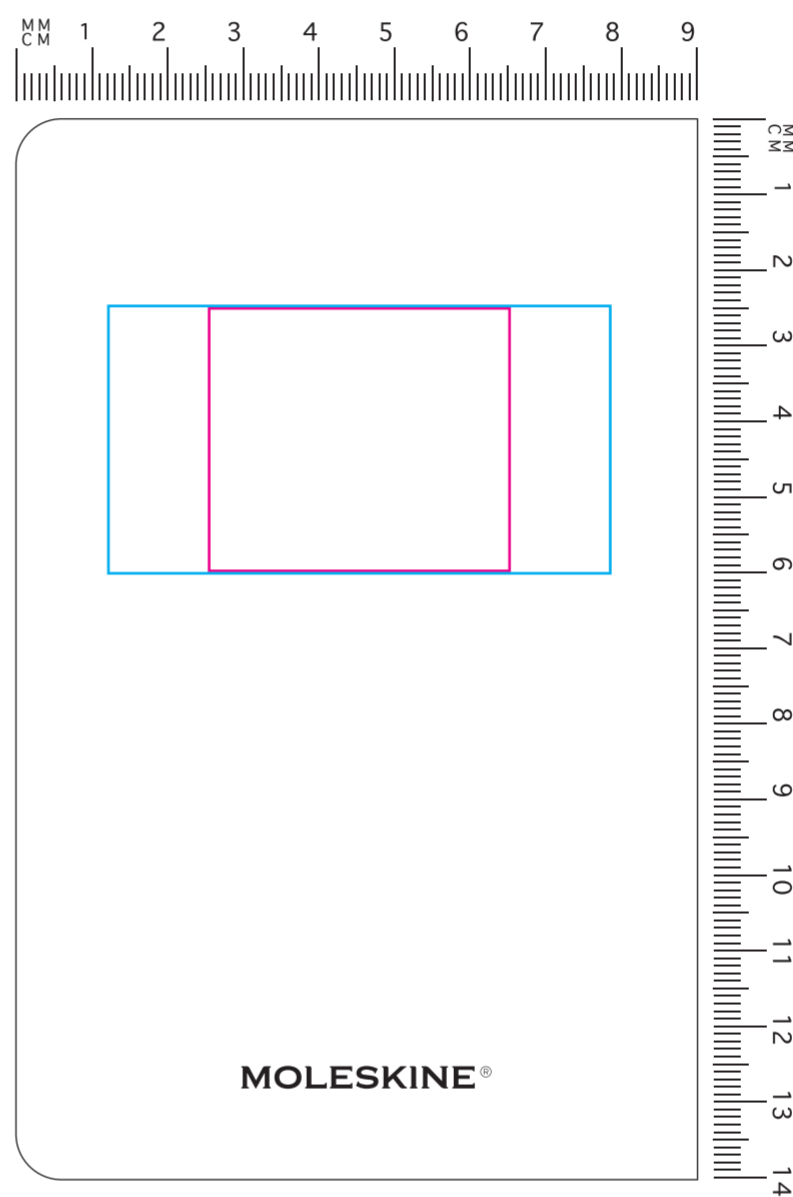
Back Cover = -----

Paper Band = -----

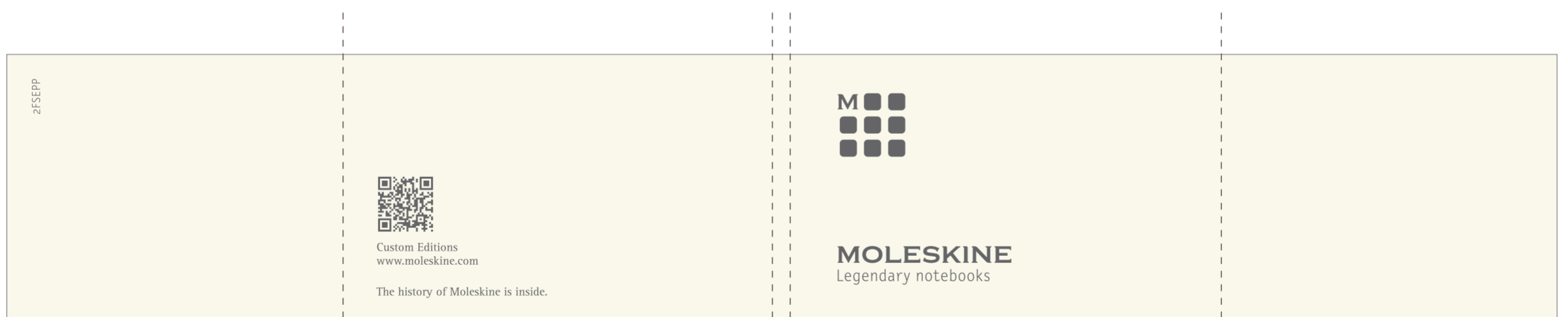
**Please read carefully:**  
N/A



Front Cover



Back Cover



Paper Band

### Available Print Area(s):

- Notebook: Front Cover (Debossed) = 66x80mm  
(Can be positioned anywhere at this size within the Screen Area)
- Notebook: Front Cover (Screen/Digital) = 66x116mm
- Notebook: Back Cover (Debossed/Digital) = 40x35mm
- Notebook: Back Cover (Screen) = 66x35mm
- Paper Band (Bespoke): Bleed Boundary = 327x60mm
- Paper Band (Bespoke): Max Print Area = 322x55mm
- Paper Band (Bespoke): Text Limit = 317x50mm

### Notes For Artroom:

- Artist, you will need to Multiply the artwork when using the Embossed swatch.